

Sirius Transfection Reagent

(P40)

I-Application:

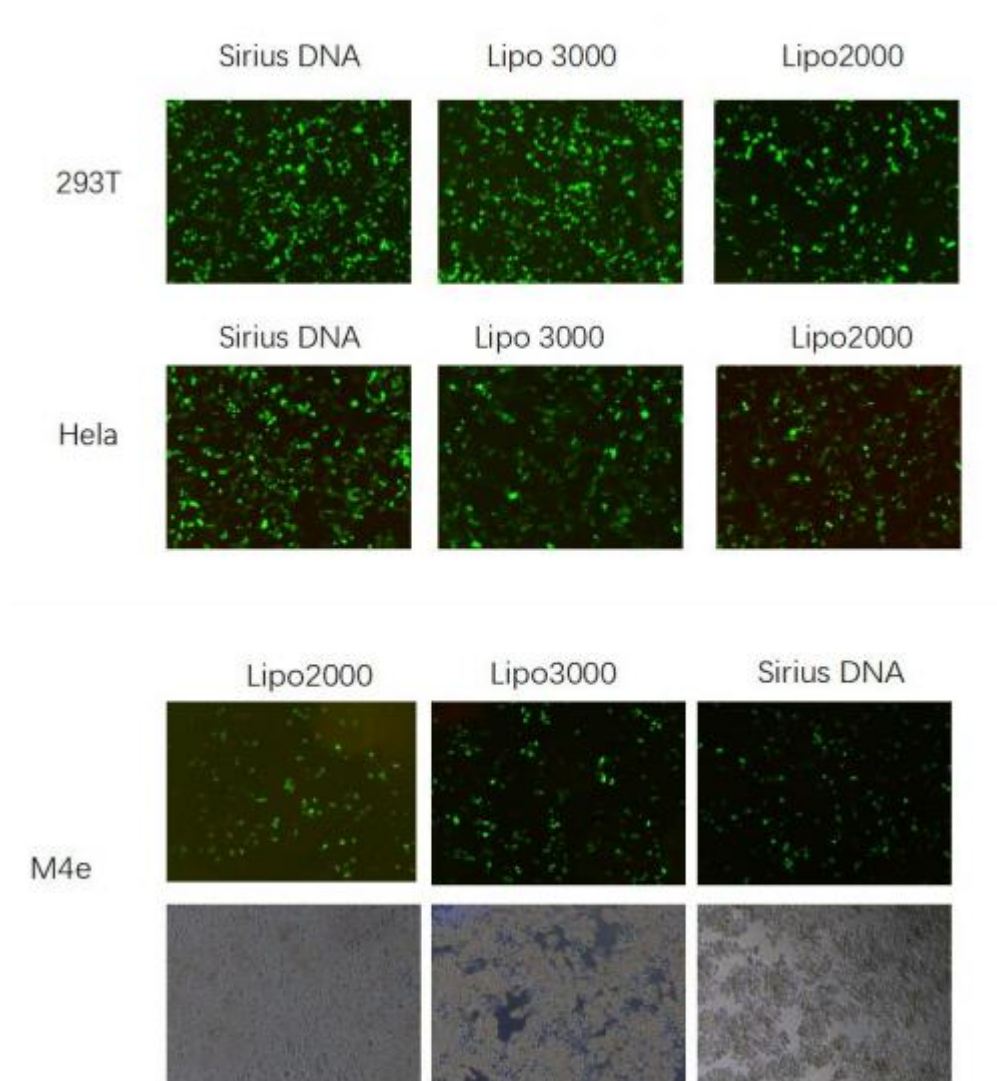
Sirius Transfection Reagent is a proprietary formulation for transfectin nucleic acids into a wide range of eukaryotic cells . It is designed to transfect a wide range of eukaryotic cells including insect cells and many cell lines not transfected well by other reagents (e.g .,MCF-7, RAW 264.7, PC-3, HeLa, MA-10, HepG2, SH-SY5Y, A7r5, STO, SCC-61, STSAR-90, SQ20B, T98) .

Note: For the most up-to-date list of cell types that have been successfully transfected with Sirius Transfection Reagent for life science research only.

II-Product Description:

Sirius Transfection Reagent is a multi-component reagent that forms a complex with DNA and siRNA , then transports the complex insect cells.

Storage: Store at 4°C (Don't Freezing).



III-Functional analysis:

Cos 7 cells are transfected in 96 well plates with a reporter gene vector DNA, using 0.2-0.5 μ L Sirius Transfection Reagent and 0.1 μ g DNA or 0.25 μ L Sirius Transfection Reagent and 0.1 μ g DNA. Reporter gene activity is monitored via a colorimetric test against a reference lot. Activity must be 70% - 90% compared to a reference lot in at least one of the tested amounts, listed above.

Procedure Details				
Component	96-well	24-well	12-well	6-well
Adherent cells	$1-4 \times 10^4$	$0.5-2 \times 10^5$	$1-4 \times 10^5$	$0.25-1 \times 10^6$
Opti-MEM® Medium	25 μ L \times 4	50 μ L \times 4	100 μ L \times 4	150 μ L \times 4
Sirius Transfection Reagent	1, 1.5, 2, 2.5 μ L	2, 3, 4, 5 μ L	4,6,8, 10ul	6, 9, 12, 15 μ L
Opti-MEM® Medium	125 μ L	250 μ L	500ul	700 μ L
DNA (0.5–5 μ g/ μ L)	2.5 μ g	5 μ g	10ug	14 μ g
Diluted DNA Total	25 μ L	50 μ L	100ul	150 μ L
Diluted Sirius Transfection Reagent	25 μ L	50 μ L	100ul	150 μ L
Incubate for 5 minutes at room temperature.				
Component	96-well	24-well	12-well	6-well
DNA-lipid complex per well	10 μ L	50 μ L	100ul	250 μ L
Final DNA used per well	100 ng	500 ng	1000ng	2500 ng
Final Sirius Transfection Reagent used per well	0.2–0.5 μ L	1.0–2.5 μ L	2.0-5.0ul	5.0–12.5 μ L
Incubate cells for 1–3 days at 37°C. Then analyze transfected cells.				

IV- Cytotoxicity analysis:

Cell growth is assessed using the Cell Counting Kit (K009,ZETA LIFE Inc.)which is an indirect measure of cytotoxicity. The remainder of cells from functional analysis is tested for viability.

V-The important guidelines:

Sirius Transfection Reagent complexes must be made in serum-free medium such as Opti-MEM Reduced serum Medium and can be added directly to cells in culture medium, in the presence or absence of serum .

It is not necessary to remove complexes or change and add medium after

transfection. The amount of Sirius Transfection Reagent required for successful transfection varies depending on the cell type and passage number. Start any new transfection by testing the recommended four concentrations of Sirius to determine an optimum amount.

Stability: 24 months.

Order Information

Name	Catalog	Size
Sirius Transfection Reagent	P400025	0.25ml
Sirius Transfection Reagent	P400050	0.5ml
Sirius Transfection Reagent	P400075	0.75ml
Sirius Transfection Reagent	P400150	1.5ml
Sirius Transfection Reagent	P400500	5.0ml
Sirius Transfection Reagent	P401000	10.0ml